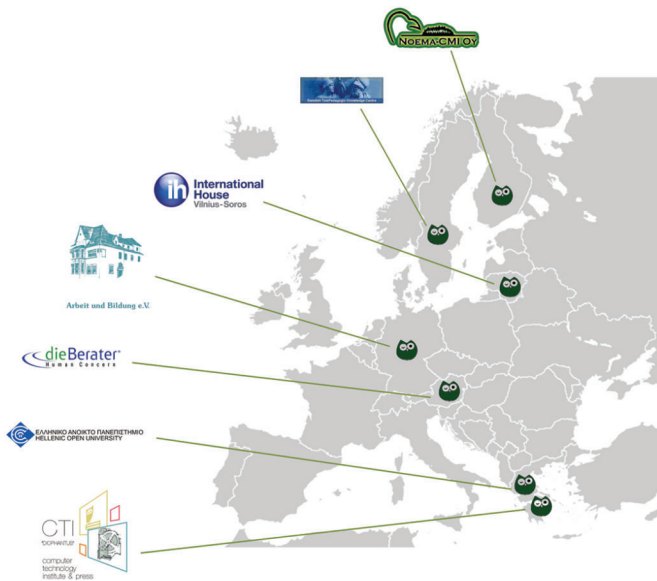


Project partners



Noema CMI OY
Lohilahti, Finland
www.noema.fi

Swedish TelePedagogic Knowledge Centre
Nyköping, Sweden
www.pedagogic.com

Soros International House
Vilnius, Lithuania
www.sih.lt

Arbeit und Bildung e.V
Marburg, Germany
www.arbeit-und-bildung.de

die Berater
Vienna, Austria
www.dieberater.com

Hellenic Open University
Patras, Greece
www.hou.gr

CTI & Press "Diophantus"
Patras, Greece
www.westgate.gr

Project Coordinator



Computer Technology Institute
& Press "Diophantus"

N. Kazantzaki Str,
Patras University, Rion
26504, Greece
Tel.: +30 2610 960430
Fax: +30 2610 960477
www.westgate.gr

Contact:
Prof. John Garofalakis
garofala@cti.gr

Project website

www.criton.eu

This project has been funded with support from the European Commission. This publication reflects the views only of the author, and the Commission cannot be held responsible for any use which may be made of the information contained therein.



Prediction of e-learners' progress and timely assessment of the achievement of learning outcomes in Lifelong Learning



"Action is the foundational key to all success."

PABLO PICASSO

www.criton.eu

Pilot users' feedback

I enjoyed the easy navigation of CRITON - all processes were explained clearly. An attractive, accessible platform! A real treat.
Student, Lithuania

The CRITON platform incorporates advanced communication tools for teachers to post messages and communicate with their e-learners in a simple way.
Teacher, Greece

The CRITON platform has all potential to be a valuable tool and interesting meeting point for teachers from many countries.
Teacher, Lithuania

The platform could be very useful as a plugin for existing LMS.
Teacher, Germany

It's a really simple and friendly environment. The best part is that it allows you to easily add and manage e-learner's data and get a prediction.
Teacher, Greece

PILOTING PLATFORM: Prediction page example

E-learner's data

Name: Ona Onaite	Gender:Female	Age: 26-35
Email: onaita@email.it	Background: High school	Dependents: 0
Grade 1st task: C	Grade 2nd task: -	Grade 3rd task: -
Working status: Study full time	Difficulty of course:Intermediate	Pass Interim Test: Yes
Access to LMS: -	Read Messages:-	Time of access: -

Prediction

Ona has 98.4% probability to pass the course and 1.6% to fail. (Precision 91.2%)



Important factors:Working status (Study full time)

Project ACTIVITIES

The CRITON project set out the ambitious plan to produce a unique **web-based dropout prediction tool** based on extended research about **different assessment methods used in e-learning environments** throughout Europe as well as **factors that play a significant role in e-learners' dropout**.

Different assessment methods used in eLearning environments were studied in order to define the *most widely used assessment practices*.

A pedagogic survey with teachers on e-assessment practices resulted in the identification of at least four indicator groups (**Socio-demographic; Individual learning & Efficacy; Behavioral and Management indicators**) for measuring dropout and success rates in e-learning.

The **CRITON platform** using advanced **data mining techniques** was developed in order to predict the students' final performance. The CRITON platform aims at **identifying students who are at risk of academic failure or dropping out of online courses, and provides effective and appropriate interventions to support them**. The CRITON platform already has 400 users (teachers and students) from 6 different countries (Greece, Austria, Finland, Lithuania, Sweden and Germany) and it is still growing.

All it takes to start using this platform is to register at:

www.criton-platform.eu

IDENTIFICATION indicator groups

Socio-demographic indicators:

- 1.1 Age
- 1.2 Gender
- 1.3 Number of children
- 1.4 Educational background
- 1.5 Previous grades
- 1.6 Working status
- 1.7 Chosen course level

Individual learning and efficacy indicators:

- 2.1 Intrinsic goal orientation
- 2.2 Extrinsic goal orientation
- 2.3 Individual learning strategy
- 2.4 E-learning self-efficacy
- 2.5 Computer self-efficacy
- 2.6 Self-efficacy

Behavioural indicators:

- 3.1 Level of participation in the online course
- 3.2 Delivering contents
- 3.3 E-learning behaviour

Management indicators:

- 4.1 Time management
- 4.2 Management of the physical environment
- 4.3 Management of the social environment and helpseeking behaviour

What you get from the CRITON platform:

If you are a **teacher**:

- ✓ You can **forecast** your e-learner's progress on time
- ✓ You can **communicate** with your students via **CRITON Groups**
- ✓ You can **exchange** ideas and opinions with other teachers via **CRITON social networking tools**

If you are a **student**:

- ✓ You can **improve** your performance with your **teacher's assistance**
- ✓ You can **communicate** easily with your teacher and your classmates via **CRITON Groups**