

AMBIENT ASSISTED LIVING

The Newsletter of CompAAL



PROJECT

The CompAAL consortium presents you the latest developments of professions, skills and competences in the domain of Ambient Assisted Living (AAL).

As widely known, Europe is an Aging society. The consequences of the demographic change represent an exceptional challenge for public health and elderly care systems of the European Union. ICT based assistance systems promise a solution to this problem, enabling the elderly to stay longer in their familiar surroundings. Yet, these systems are highly demanding both to those planning, installing and maintaining them and to the caregivers.

CompAAL aims at developing Job Role Profiles in the field of AAL. Focusing on the development of well-trained employees, which will ensure high quality of services and care for elderly people, the project will contribute to the Active and Health Aging (AHA) goals of the European Commission.

Enjoy an inspiring read!

contact us:

e-Jobs Observatory
contact@e-jobs-observatory.eu
www.e-jobs-observatory.eu



The final version of the 5 AAL Role Profiles will be out soon!

You were informed of the identification of the following 5 AAL Role Profiles in the newsletter, published on February 2013:

- AAL System Architect
- AAL Solution and System Developer
- AAL Maintenance Specialist
- AAL Consultant
- AAL Community Manager

Since then, external experts evaluated these and, currently, the expert group of CompAAL on the Role Profiles is working towards the final version. We envisage to provide you with this before the summer break!!

The AAL Role Profiles are an innovation in the AAL field, as they reflect the market needs and are aligned with EU frameworks such as the European e-Competence Framework. This represents a first step towards Europe-wide harmonized profiles that will support AAL and the job market alike.

AMBIENT ASSISTED LIVING

The Newsletter of CompAAL

PAST EVENT

PErvasive Technologies Related to Assistive Environments (PETRA) Conference, Rhodes Island, Greece, 19-21 May 2013

This year the PETRA Conference is taking place in Rhodes Island, Greece in 19-21 May 2013.

The Conference brings together different types of technology to address an important social and healthcare issue: as the world's population ages, there is growing interest in solutions for the in-home care of the elderly as well as for the care of people with Alzheimer's, Parkinson's and other disabilities or traumas.

PETRA (which means "stone" in Greek) reflects the needs of the domestic environment, or "Oikos" as it was known in ancient Greece, but from a technological perspective. People's living environments are particularly important in an increasingly crowded and complex world where the need for inclusiveness and connectivity with the rest of the world is key. PETRA addresses the facts that, as people grow older, they will increasingly rely on technology to be able to stay in their homes.

Within the framework of the PETRA Conference, CompAAL will be presented on 20 May 2013 in two of the Conference's sessions.

• Session E: Tools, Infrastructures, Architectures and Techniques for Deploying Pervasive Applications in Assistive Environments

Session Chair: Panagiotis Bamidis

Theodor Panagiotakopoulos, Aspasia Theodosiou and Achilles Kameas, representatives of the Hellenic Open University (HOU), will participate in this session and provide the audience with an overview of CompAAL and, in particular, the AAL Role Profiles, one of the main results of CompAAL, currently under development.

• Special Session I: How Ambient Assisted Living influences the job market - a European view

Session Chair: Achilles Kameas

1 Emerging AAL jobs and competence needs identified by the CompAAL project, Adriana Baer

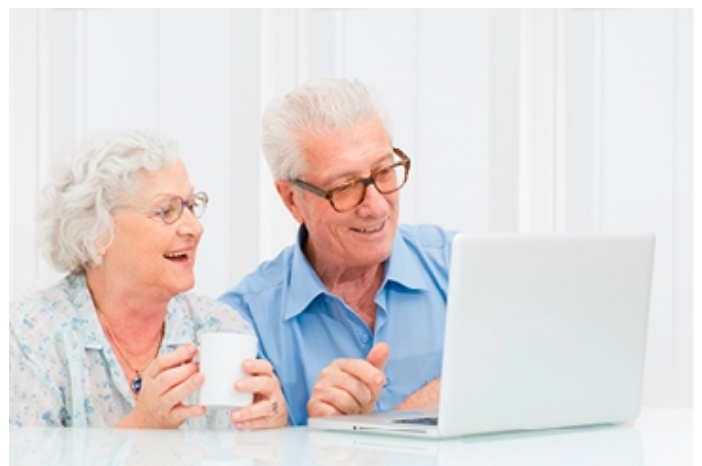
Moderated discussion by Aspasia Theodosiou and Achilles Kameas

2 e-Jobs-Observatory: Promoting European standards in qualification for AAL-Jobs, Aikaterini Sylla

Moderated discussion by Aspasia Theodosiou and Achilles Kameas

In this second session, Aspasia Theodosiou and Achilles Kameas, HOU, will stimulate a discussion on the impact of AAL in the job market. Presentations will be held by Adriana Baer (Euproma) and Aikaterini Sylla (EMF).

In the next newsletter, you will be informed about the outcomes of the PETRA Conference with access to all presentations!



AMBIENT ASSISTED LIVING

The Newsletter of CompAAL

UPCOMING EVENTS

Finally, we are pleased to inform you about the following upcoming related events:

■ **First European Forum for Public Procurement of Healthcare Innovation – 30 May, Paris, France**

This first Forum is aimed at healthcare sector professionals (hospitals, enterprises, innovation agencies, R&D services etc.) who wish to learn more on hospital purchasers and their decisive and main role in tomorrow's innovation management. The forum will also provide the opportunity to create, for the first time at European level, a dialogue between public procurers in the healthcare sector, industries and public authorities' representatives aiming at promoting innovative products and services.

[More information here.](#)

■ **AALIANCE2 Workshop on Reference Architectures and AAL Middleware – 11 June, Frankfurt/Main, Germany**

This fourth workshop will focus on reference architectures and AAL middleware. Many projects have in the last few years developed AAL runtime environments and middleware solutions that aim at being reusable "AAL operating systems". The workshop will try to summarize the state of the art in AAL middleware and discuss whether a standardization of an AAL "reference architecture" is needed, and on which levels (e. g. reference model, system architecture, APIs, terminology/ontology). Representatives of the most important middleware projects and products, including universAAL, URC; OpenHAB, IP-Symcon, OpenRemote, MundoCore and others will be invited.

[More information here.](#)

■ **International Conference on Intelligent Environments IE'13 - July 16-19, Athens, Greece**

IE13 is the ninth edition in a series of highly successful conferences that were previously organized in Colchester (UK), Athens (Greece), Ulm (Germany), Seattle (USA), Barcelona (Spain), Kuala Lumpur (Malaysia), Nottingham (UK), and Guanajuato (Mexico).

The conference provides a multidisciplinary collaborative forum for researchers and practitioners from Computer Science, Electronic Engineering, Building Architecture Art & Design, Sociology, Government and Education to present theoretical and practical results of Intelligent Environments. Authors are invited to submit regular full papers as well as contributions to the Doctoral Colloquium, Posters Session or Demos & Videos Session.

A number of workshops will complement the main conference program. Papers accepted in any of the workshops sponsored by this conference will be included in one Proceedings volume that will collect the contributions in all workshops, see more details in Publications section.

[More information here.](#)

Thank you and enjoy an inspiring read!

The COMPAAL consortium